

Fluidic Solutions and Solenoid Valve Components

Carwash Systems



Different in Quality

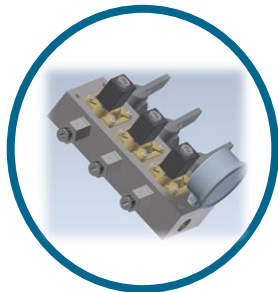
Fluidic Solutions and Solenoid Valve Components



High flow rate
Solenoid Valve



High pressure
Solenoid Valve



Functional
Manifolds



3 way Solenoid
Valve



Pneumatic
Actuators

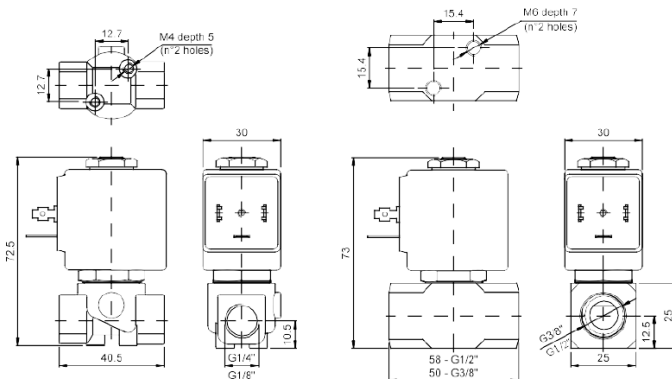


Accessories

High Pressure Solenoid Valves



R2AC Series



Connections:

- G1/8, G1/4, G3/8, G1/2

Orifices:

- DN from 1 to 5,2mm

Coils:

- High performance Class F coils
- 30mm&36mm Form A available
- DC/AC electric power

Pressure:

- Up to 120bar with DN 1mm

Fluid Temperature:

- Up to 180°C with PTFE sealings

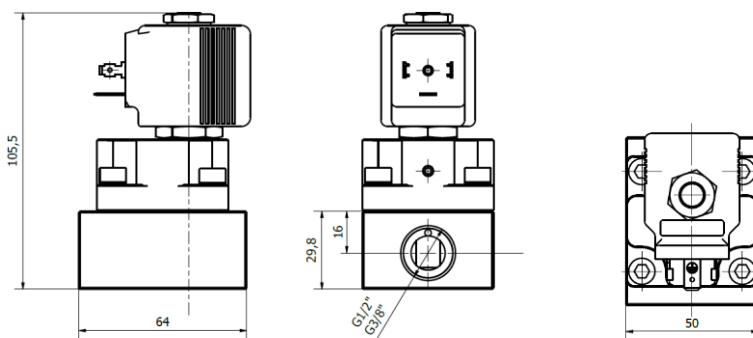
Options:

- Stainless steel for aggressive fluids
- Antihumidity Kit

High Pressure Solenoid Valves



R2HP Series



Connections:

- G3/8, G1/2

Orifices:

- DN 12mm

Coils:

- High performance Class F coils
- 36mm Form A available
- DC/AC electric power

Pressure:

- Up to 150bar with DN12mm

Fluid Temperature:

- Up to 140°C with PBT sealings

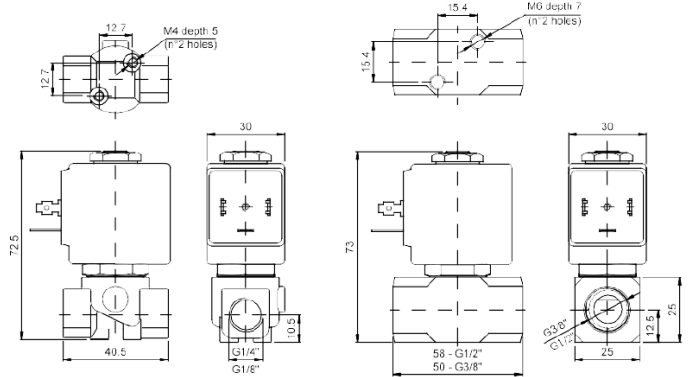
Options:

- Antihumidity Kit

3 ways Solenoid Valves



R2ACT Series



Connections:

- G1/8, G1/4, G3/8, G1/2

Orifices:

- DN from 1 to 3,5mm

Coils:

- High performance Class F coils
- 30mm&36mm Form A available
- DC/AC electric power

Pressure:

- Up to 25bar

Fluid Temperature:

- Up to 180°C with PTFE sealings

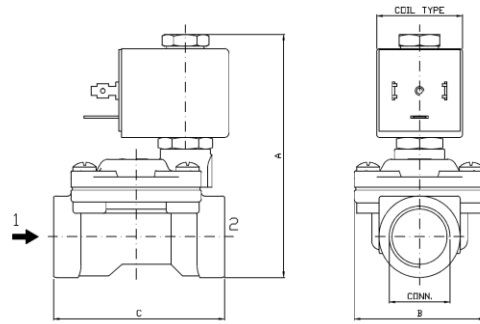
Options:

- Stainless steel for aggressive fluids (rimwash)

Low Pressure Solenoid Valves



R2SP Series



Connections:

- G3/8, G1/2, G3/4, G1, G1 ¼, G1 ½, G2

Orifices:

- DN from 13 to 50mm

Coils:

- High performance Class F coils
- 22mm&30mm available
- DC/AC electric power

Pressure:

- Up to 16bar

Fluid Temperature:

- Up to 160°C with FKM, EPDM sealings

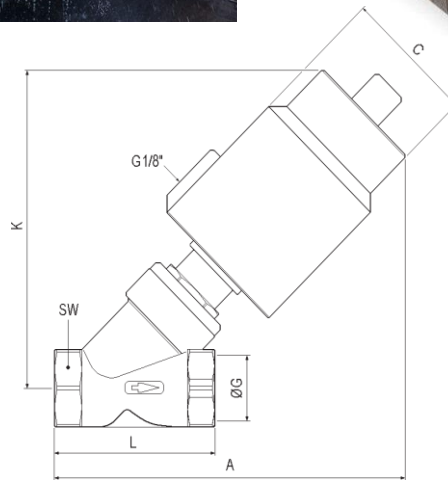
Options:

- Stainless steel for aggressive fluids
- Antihumidity Kit

Pneumatic Actuators



R2SI Series



Connections:

- G3/8, G1/2, G3/4, G1, G1 ¼, G1 ½, G2

Orifices:

- DN from 13 to 45mm

Actuators:

- 40mm, 50mm, 63mm and 80mm diameters

Pressure:

- Up to 13bar

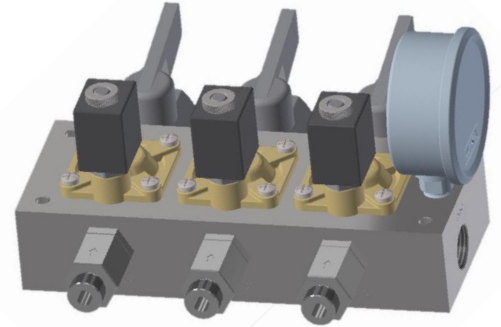
Fluid Temperature:

- Up to 180°C with PTFE Sealings

Options:

- Position Electrical Indicator

Functional Manifolds Self Service

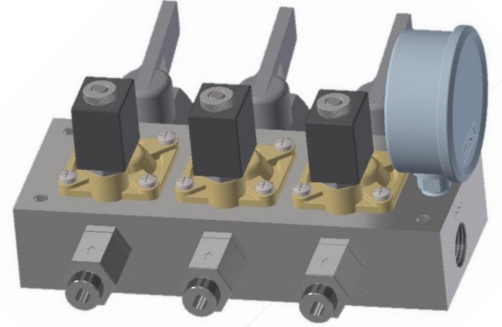


Multi In – Single Out

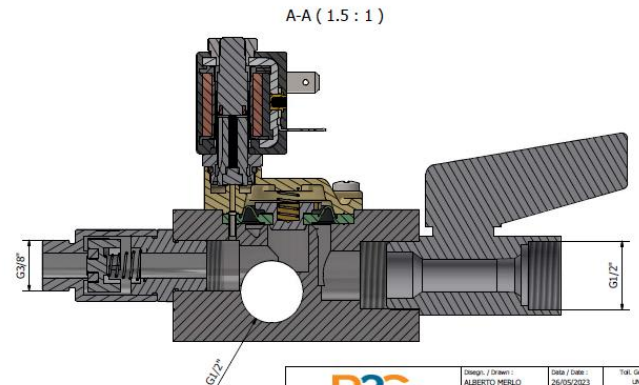
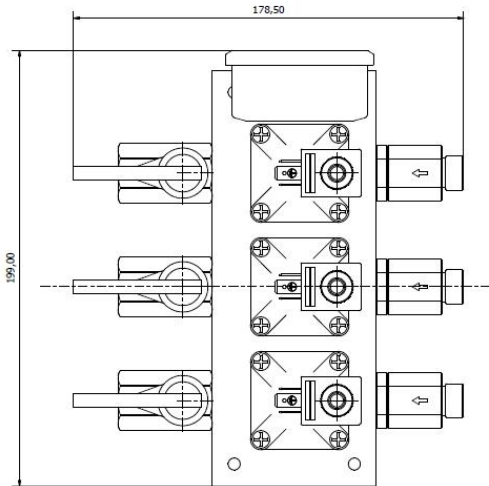
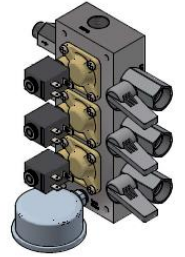
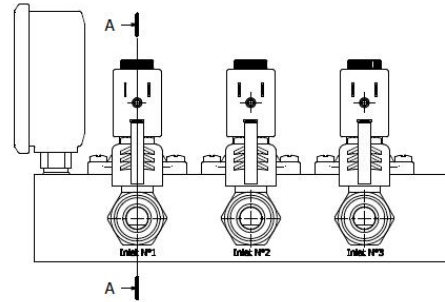
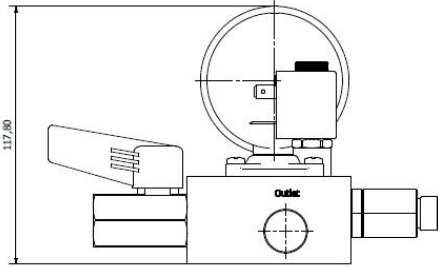
Features:

- Designed for Self service stations
- Hot Water, Cold Water, Osmosys water, etc
- 3 station or 4 station versions
- Brass, Stainless Steel or Plastic body
- Pressure up to 16bar
- Option Inlet manual valve assembled to close water supply on each station
- Option Stainless Steel Check valve for detergent injection
- Option pressure gauge on outlet connection assembled

Functional Manifolds Self Service

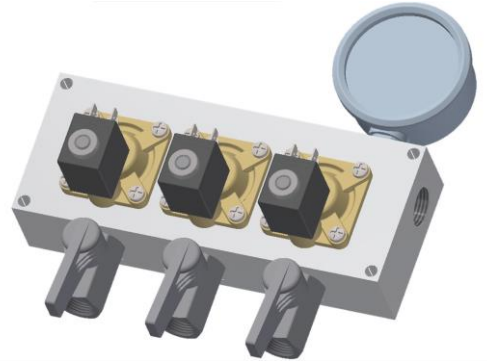


Multi In – Single Out – 3 Station



	Disegn. / Drawn: ALBERTO MERLO Progett. / Material: CWS17 Verificato / Checked:	Data / Date: 26/05/2023 Press. / Weight: N/A Trattamento Superf. / Surface Treatment:	Titol. Des. / Des. Title: UNI ISO 2768 Raggi non quotati 0,3mm Smussi non quotati 0,3 x 45°
Descrizione / Description: MANIFOLD FUNZIONALE 1-2 STD 3-ST - MULTI IN FULL	Codice / Code: P2300024C Rev. / Model: P2300024C Scale / Scale: 1:2 Foglio / Sheet: 1 of 3		

Functional Manifolds Tunnels - Portals

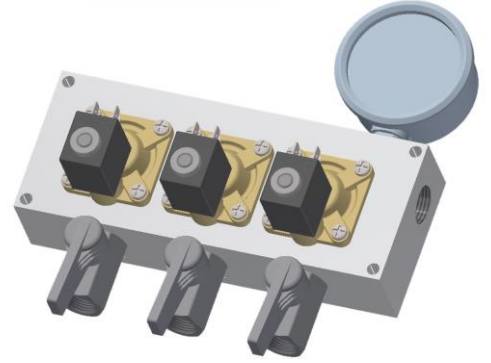


Single In – Multi Out

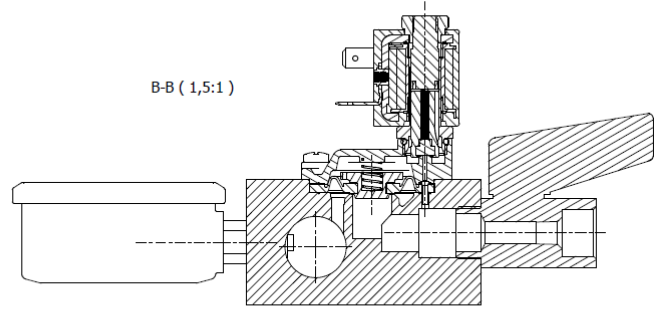
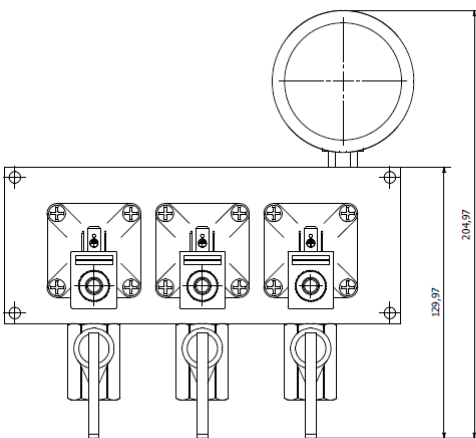
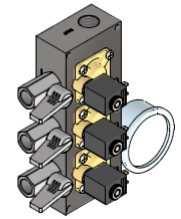
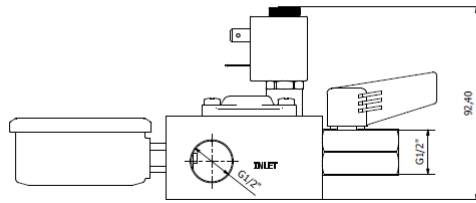
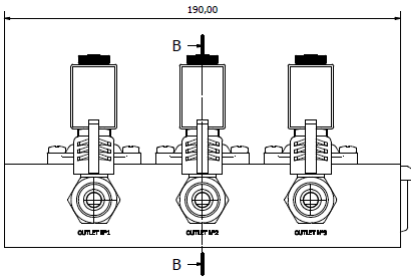
Features:

- Designed for Tunnels stations
- Inlet water is diverted into different Tunnel stations
- 3 station or 4 station versions
- Brass, Stainless Steel or Plastic body
- Pressure up to 16bar
- Option Outlet manual valves assembled to close the single water circuits
- Option pressure gauge on outlet connection assembled

Functional Manifolds Tunnels - Portals



Single In – Multi Out – 3 Station



	Design / Disegnato:	Alberto Merlo	Date / Data:	26/05/2023	Titol. / Des. / Qual. / Titol.:	UNI ISO 2146
	Manif. / Materiali:	Plastic / Plastica:	Col. / Colore:	da definire	Raggi non lucidati 0,3mm	Smussi non lucidati 0,3mm
Note / Note: Trattamento Superficie / Surface Treatment:						
Descrizione / Description: MANIFOLD FUNZIONALE 1-2 STD 3 ST - MULTI OUT FULL		Codice / Code: P2300031C				
Rev. / Revisione: A		Progett. / Project: P23				
Scale / Scale: 1:1		Foglio / Sheet: A2				



Carwash Systems

R2G Fluidics Srl
Via dell'Industria 9
20875 Burago di Molgora (MB) –
Italy
Tel/Ph: +39 338 1431375
www.r2g-fluidics.com
sales@r2g-fluidics.com –
vendite@r2g-fluidics.com

Different in Quality